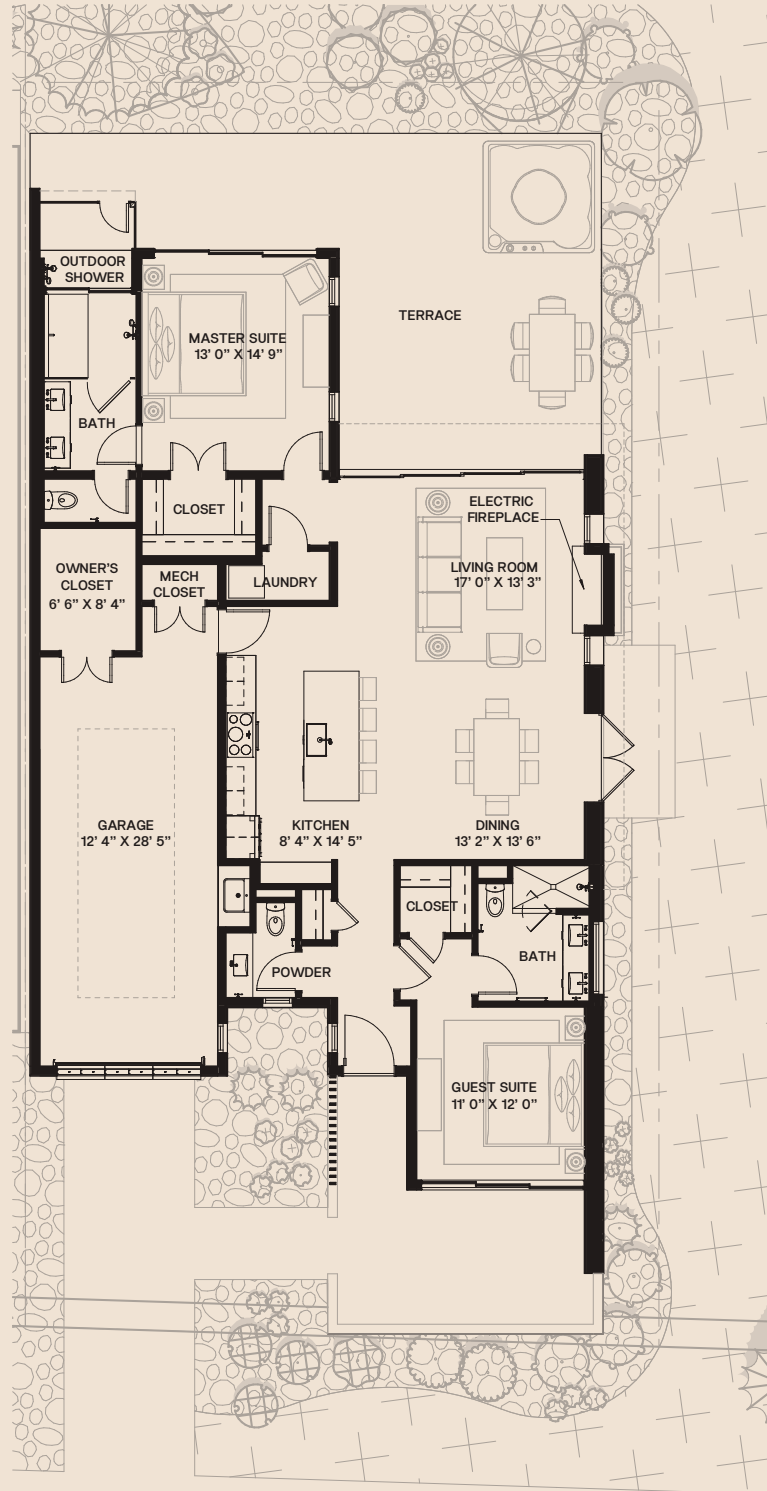


# STRATA



ONE STORY CASITA

2 BED / 2.5 BATH / 1 GARAGE  
~1,500<sup>SF</sup>

LOCATED ON LOTS  
18 - 25

Pricing and all information contained herein are subject to change. Artist's conceptual renderings are conceptual in nature and intended for illustrative purposes only. This information is subject to the legal disclaimers which can be found in full at [lionsbackresort.com](http://lionsbackresort.com)

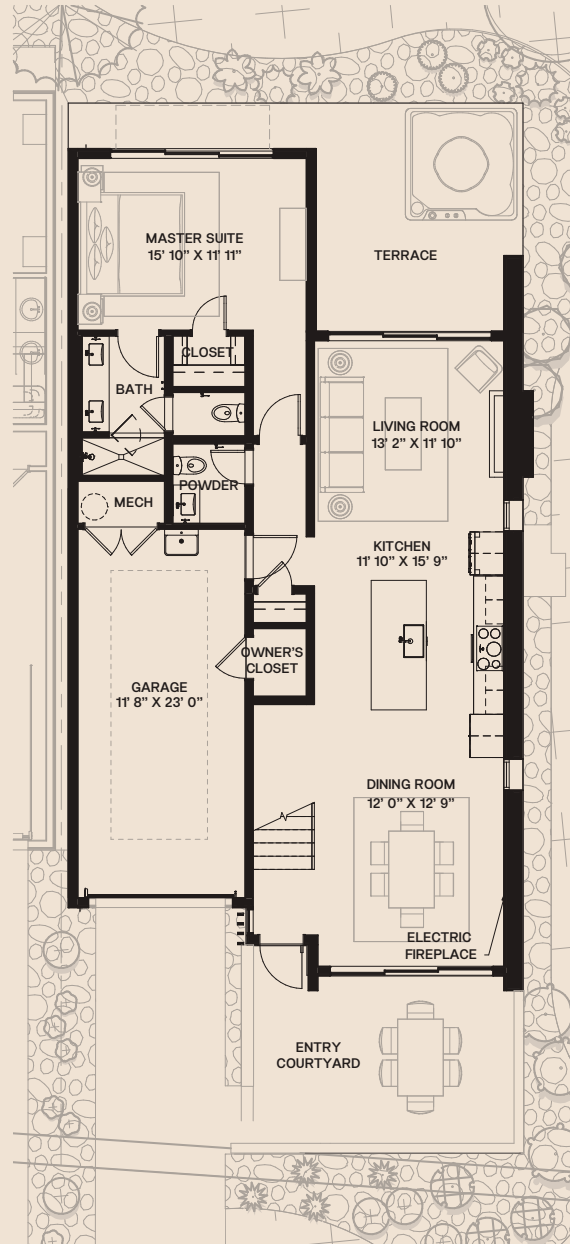


# STRATA

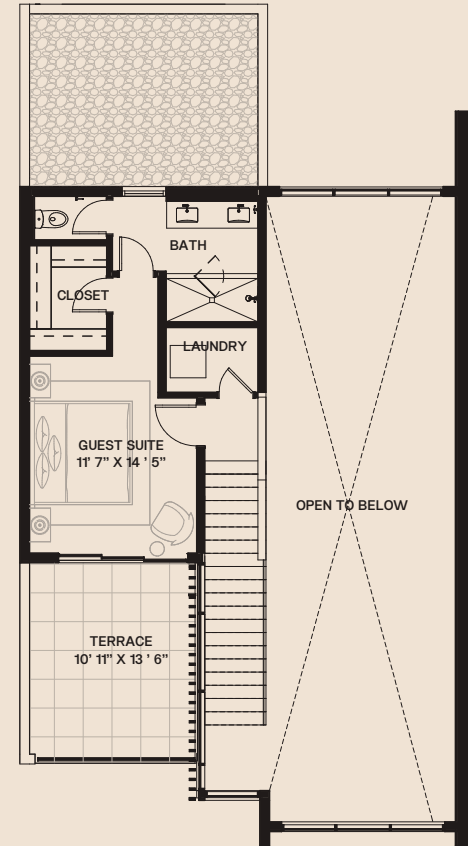
TWO STORY CASITA

2 BED / 2.5 BATH / 1 GARAGE  
~1,500<sup>SF</sup>

LOCATED ON LOTS  
26 - 33



GROUND FLOOR



SECOND FLOOR

Pricing and all information contained herein are subject to change. Artist's conceptual renderings are conceptual in nature and intended for illustrative purposes only. This information is subject to the legal disclaimers which can be found in full at [lionsbackresort.com](http://lionsbackresort.com)

